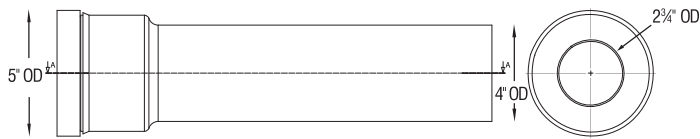


## EXTENSION PIPE • PART NO. 030

The 18" extension pipe was designed with the idea to simplify the installation process making it easier to **hide the pump and plumbing behind the wall**. It has an inner gasket which connects to the rear spigot of the Saniflo toilet creating a sealed connection.

The diameter of the extension pipe is 4" (5" bell housing). **It comes with a paintable decorative trim** that surrounds the pipe and provides a perfect finish.

*\* Suitable to be used with the Saniaccess3, Saniplus, Sanibest Pro and Saniaccess2 systems*



## SANIALARM • PART NO. 050

This solution alerts homeowners of high water levels inside the pump. The Sanialarm helps prevent inappropriate use and encourages prompt intervention.

The Sanialarm has a level pressure switch that triggers an alarm fixed on the top of the unit if the volume of water exceeds the maximum allowed level. The alarm emits a continuous 80 dB warning sound until it is switched off or the problem is rectified.

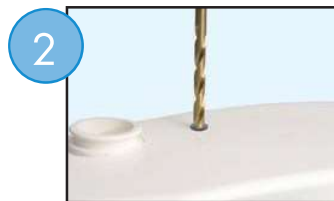
The Sanialarm is battery operated and can be installed on most Saniflo macerating units and drain water pumps.



*\* Suitable for use with Saniplus, Sanibest Pro, Sanipack, Sanigrind Pro and Sanivite*



1 Install two AA batteries (not included)



2 Drill a 3/8" diameter hole on top of the case where indicated.



3 Insert the tube and position the Sanialarm on top.



4 Turn the switch to the ON position.

## DESCALER • PART NO. 052

Prolongs the life of all Saniflo pumps by cleaning and disinfecting. This special formula is perfectly designed for cleaning and descaling the heart of your system and its internal components.

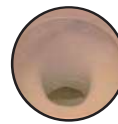
- Specifically created for use with Saniflo products
- Laboratory formulated with phosphoric acid
- Concentrated solution for optimum cleaning power
- Regular usage prolongs unit life and maintains efficiency
- Harmless to septic tank operation



Disconnect from the main power.



Pour the solution inside the bowl and flush the toilet once.



Let the solution sit inside the toilet and pump for a couple of hours.



Connect to main power supply and flush the toilet a couple of times.